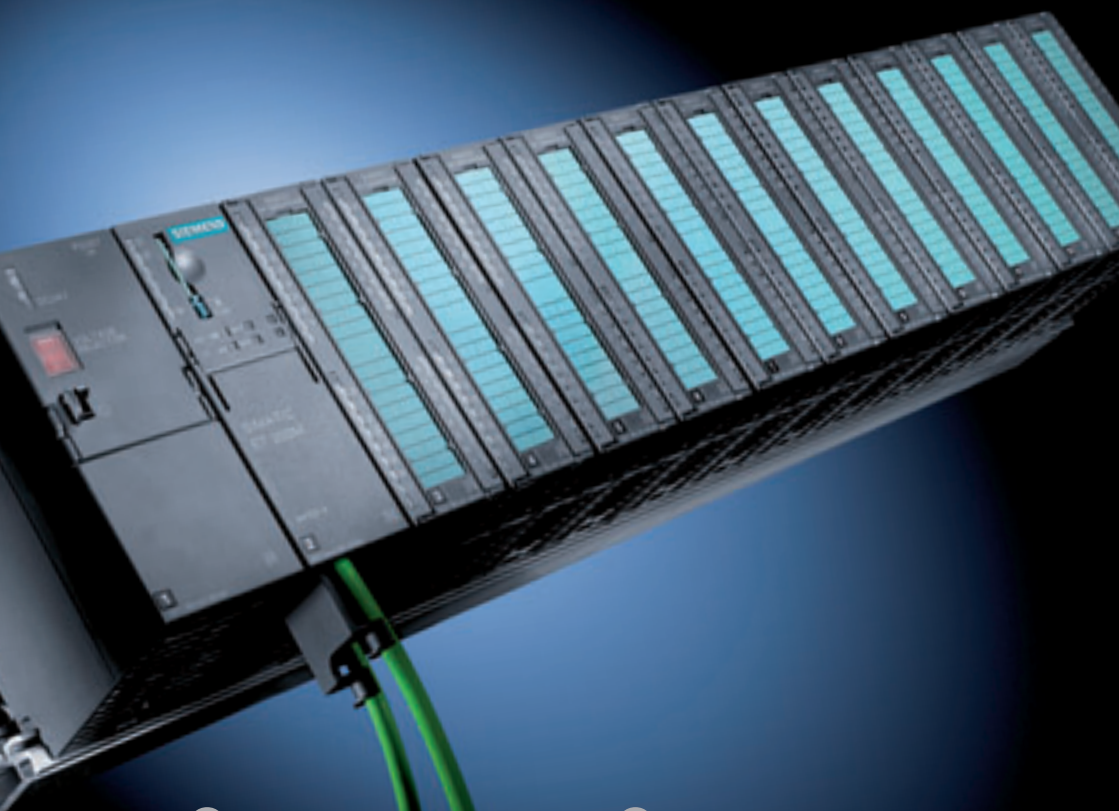


New functionalities and increased flexibility:
the multi-channel I/O station for the process industry



simatic

ET 200M



SIEMENS

Compact with maximum flexibility: **SIMATIC ET 200M**

To answer the continuously increasing demands in the process industry, it is essential to consistently apply all available potentials for optimization. Of particular importance are flexible automation solutions which require a minimum of cabinet space – solutions such as the SIMATIC ET 200M distributed I/O system.

Proven features, further innovative developments

The ET 200M is a DP slave of modular design with IP20 degree of protection. The system allows application of up to 12 multi-channel signal and function modules as well as communications processors from the S7-300 range. No slot rules need to be observed.

With the ET 200M system, users can count on a comprehensive and uniform diagnostics concept (e.g. channel-granular diagnostics), redundancy, hot swapping of electronic modules, and independent wiring – allowing maximum plant availability. Furthermore, the configuration can be changed during operation (Configuration in Run) when used together with an S7-400.



Both PROFIBUS and PROFINET are available for standard and safety-related field-bus communication. If necessary, the ET 200M can be used in hazardous areas up to Zone 2 – actuators and sensors up to Zone 1.

Fail-safe I/O modules allow integration into safety-related systems using SIMATIC Safety Integrated. Special modules such as HART or NAMUR make the system a perfect solution for process automation.

New modules allow further applications

- Increased channel density as result of 64-channel modules
- Connection of up to 12 modules per station
- Connection to PROFINET

SIMATIC ET 200 Configurator on CD-ROM

Would you like to configure your ET 200M so that it is perfectly tailored to your specific requirements? No problem. The ET 200 Configurator will help you.

This software tool is very user-friendly, leads you easily and comfortably through the configuration, and automatically creates order lists for you, including accessories. And what's more, it also helps you to stick to certain limits or regulations, such as load currents, slot rules or parameters.

Starting the application:

The CD starts automatically when placed in the CD-ROM drive. If the Windows autostart mode has been deactivated, simply switch

manually to the drive letter of your CD-ROM drive in the Windows Explorer, then start the start.exe file. You can access the contents of the CD-ROM via an interactive menu.

In case there is no CD-ROM, you can also download the SIMATIC ET 200 Configurator, free of charge, at

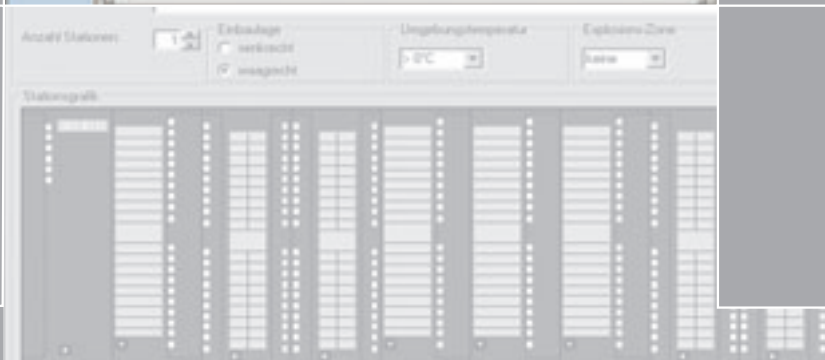
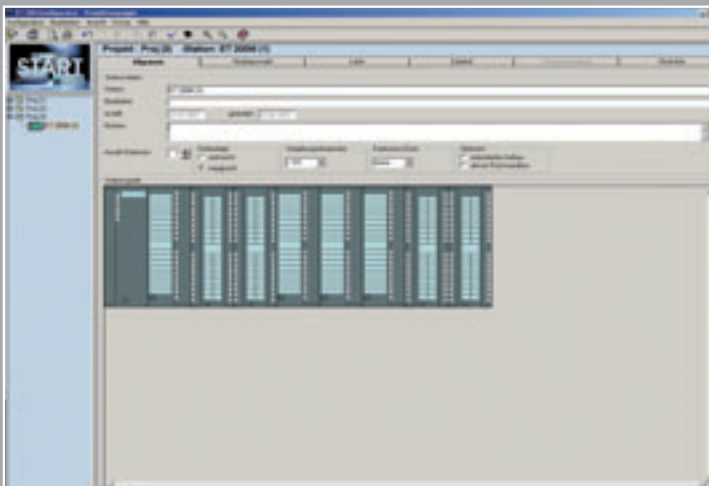
www.siemens.com/et200m

At the same address you will also find an update of our software tool every 6 months. These updates are also free of charge.

Go to the customized I/O station at the click of a mouse

The software tool is clearly structured. Six configuration views make working with the Configurator easy and user-friendly.

- **General:** general station data as well as a graphic of the configured station
- **Module selection:** guided selection of modules through recommendations and suggestions
- **Limits:** a display of station size, weight, number of modules, load voltage, parameters, etc.
- **Accessories:** guided selection of the necessary accessories (module-specific or station-wide)
- **Potential distribution:** graphical representation of the potentials within a station
- **List of components:** automatic generation of the components list simplifies ordering



Significantly reduced space requirements thanks to high channel density

New interface module

The new IM 153-2 HF interface module for connection to PROFIBUS and the IM 153-4 for connection to PROFINET allow the use of up to 12 modules per station. Proven functions such as uniform diagnostics can also be applied here.

IM 153-2 High Feature interface module with new functionalities

- Use of HART secondary variables in conjunction with 8-channel HART modules
- Uniform parameterization and data access using Drive ES and Switch ES
- Advanced time tagging for the 24-channel F-DI module
- Order No.: 6ES7 153-2BA02-0XB0

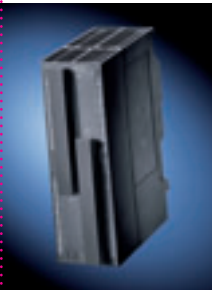
IM 153-4 interface module for connection to PROFINET

- PROFINET I/O interface with integrated 2-port switch
- Firmware update using Micro Memory Card and PROFINET
- Order No.: 6ES7 153-4AA00-0XB0



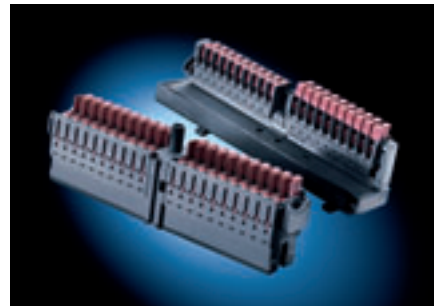
64-channel I/O modules

- Significant savings with respect to costs, space and logistics requirements thanks to higher channel density
- Either screw-type or spring-loaded terminals
- Reduction in stockkeeping costs
- Order No.: 6ES7 321-1BP00-0AA0 (64 DI, 24 V DC, active high/low)
6ES7 322-1BP00-0AA0 (64 DO, 24 V DC / 0.3 A, current sourcing)
6ES7 322-1BP50-0AA0 (64 DO, 24 V DC / 0.3 A, current sinking)

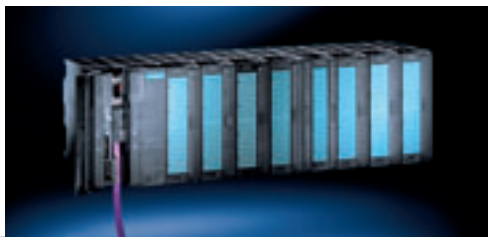


Fast Connect system for ET 200M

- Up to 60% time saving compared to conventional screw systems
- Minimization of possible fault sources thanks to simple and fast handling
- Order No.: 20-contact: 6ES7 392-1CJ00-0AA0
40-contact: 6ES7 392-1CM00-0AA0



You can find further info online in the A&D Mall at
www.siemens.com/automation/mall
or from your local Siemens contact.



The CD-ROM contains information on the following topics:

- SIMATIC ET 200 Configurator
The SIMATIC ET 200 Configurator is available for the SIMATIC ET 200S, ET 200pro, ET 200eco, ET 200M and ET 200iSP. The software tool supports you during configuration of the desired I/O station. It leads you easily and comfortably through the configuration, and automatically creates order lists for you, including accessories
- Detailed information on the ET 200 range
- General information and tips regarding danger zones

System requirements:

- 500 MHz Intel Pentium™ or comparable processor
- Microsoft Internet Explorer 5.5 or higher
- Windows™ 98 SE to Windows™ XP
- A minimum of 128 MB RAM, 256 MB RAM is recommended
- At least 16-bit color depth (Highcolor) with 1024 x 768 pixels

www.siemens.com/et200m

Siemens AG

Automation and Drives
P.O. Box 48 48
90327 NUREMBERG
GERMANY

www.siemens.com/automation

© Siemens AG, 2007
Subject to change without prior notice
03/07

E20001-F130-P240-X-7600
Printed in Germany
41C9974 MK.AS.DP.51.7.08 03077.0